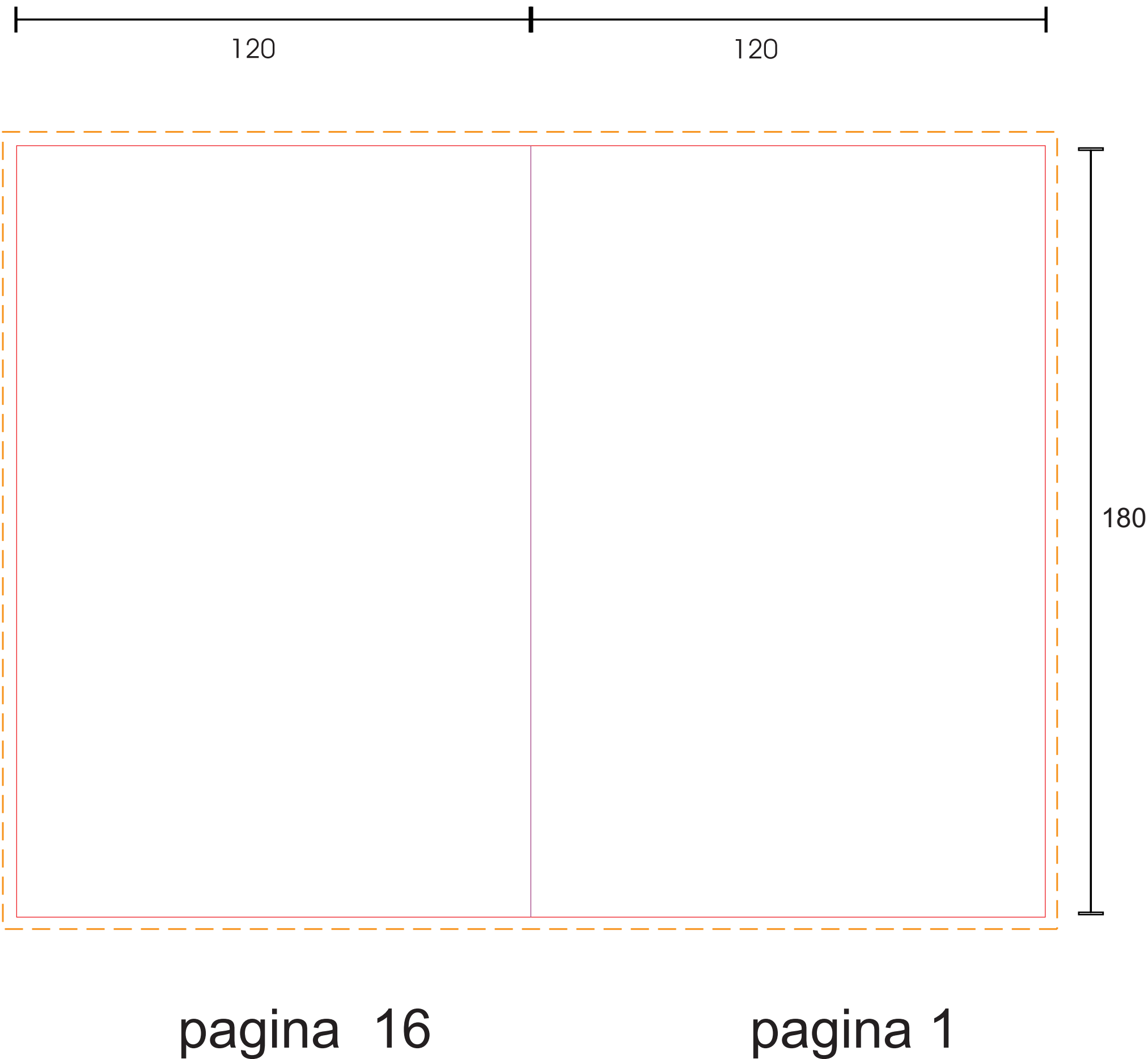


— Taglio

— Piega

— Quotatura

- - - - - Abbondanza per la grafica



120

120

180

pagina 16

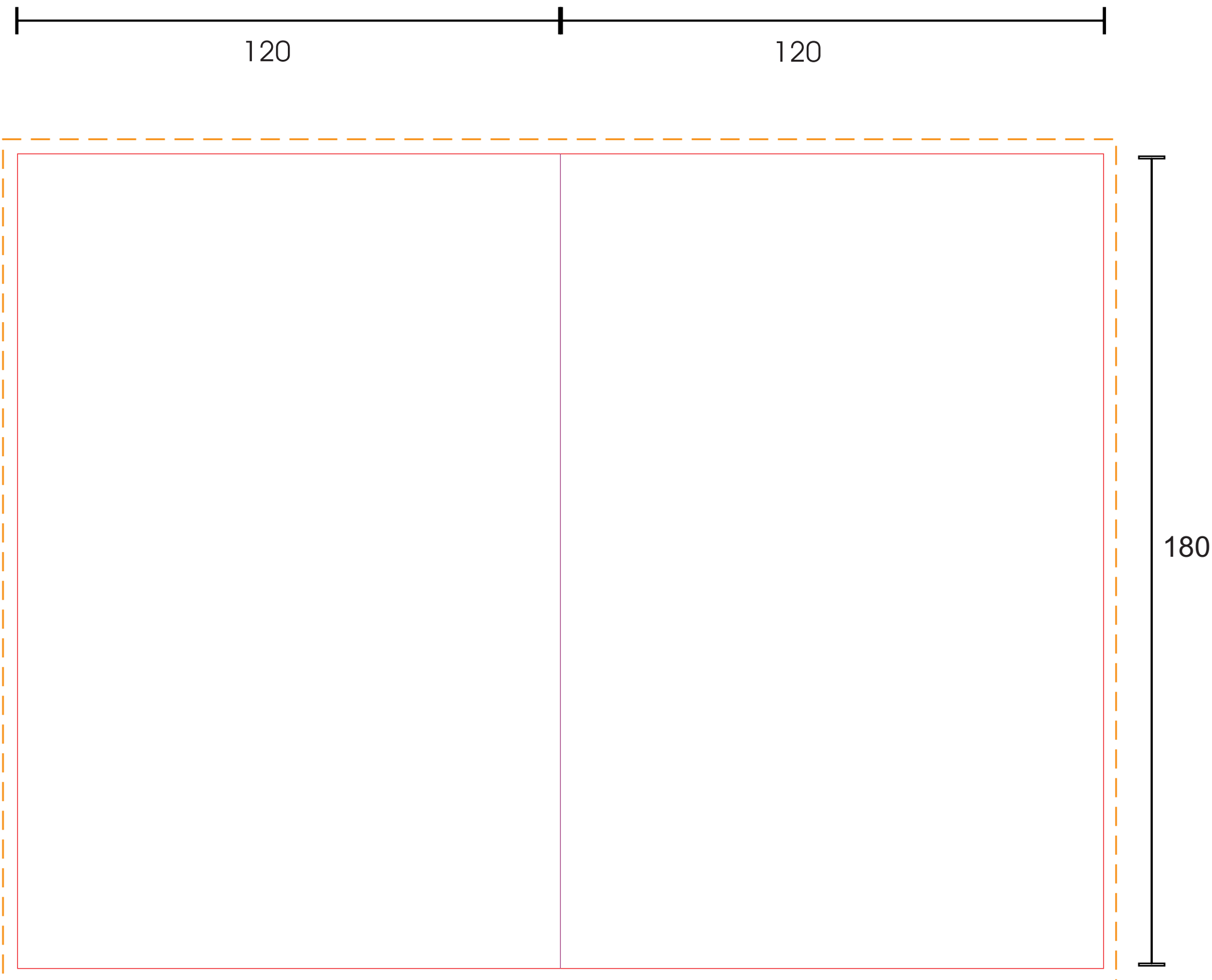
pagina 1

— Taglio

— Piega

— Quotatura

- - - - - Abbondanza per la grafica



120

120

180

pagina 2

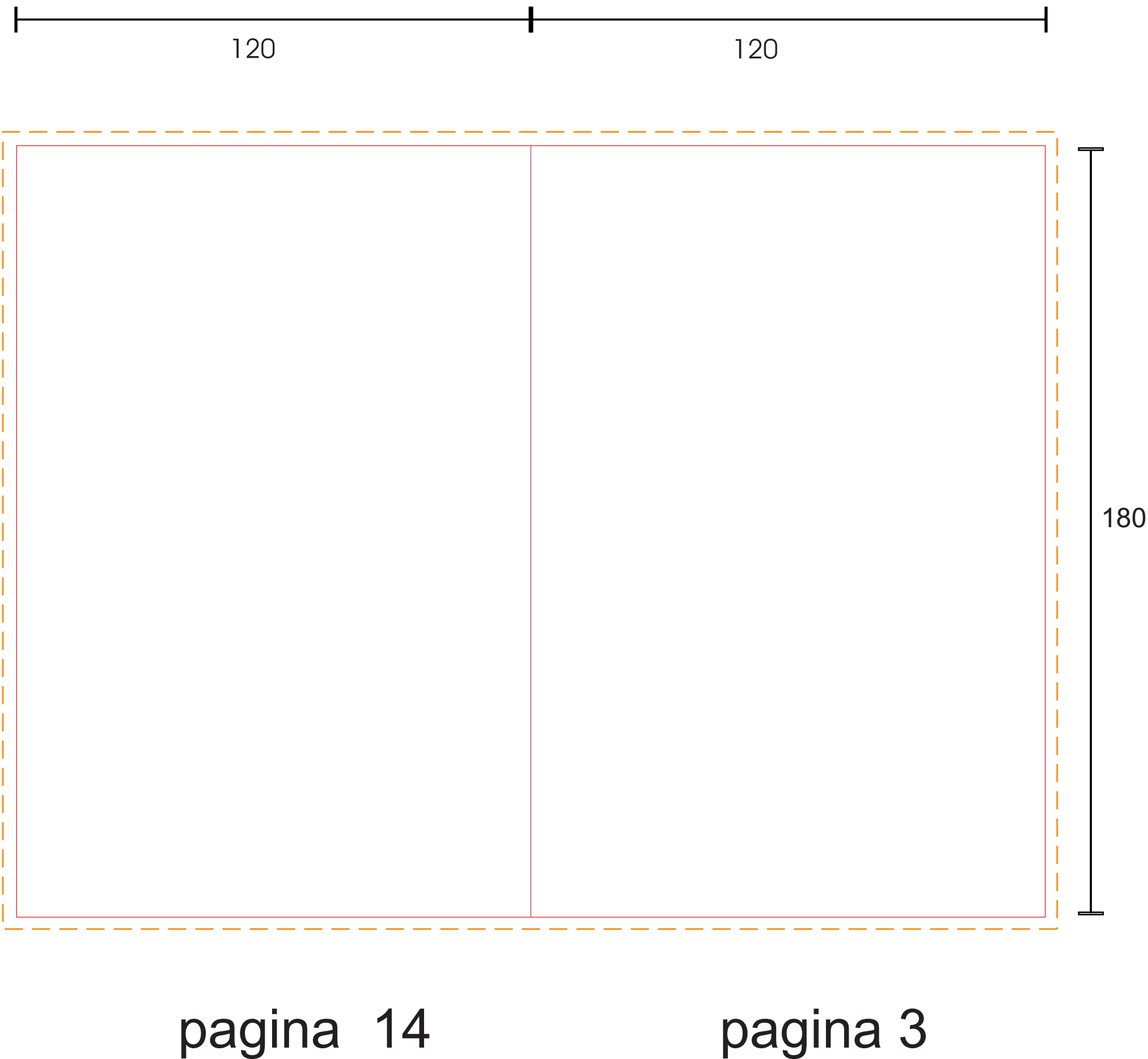
pagina 15

— Taglio

— Piega

— Quotatura

- - - - - Abbondanza per la grafica



120

120

180

pagina 14

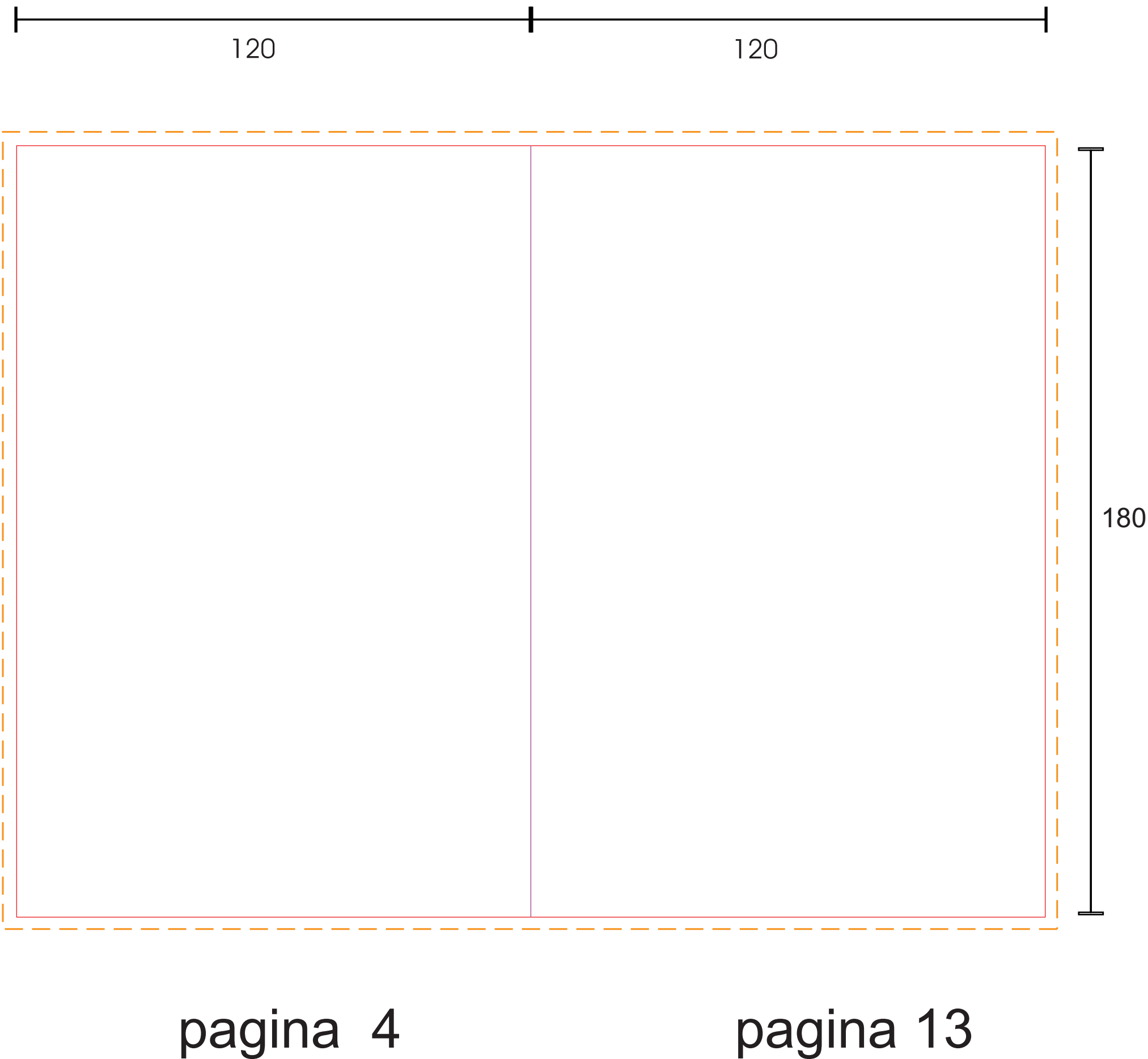
pagina 3

— Taglio

— Piega

— Quotatura

- - - - - Abbondanza per la grafica

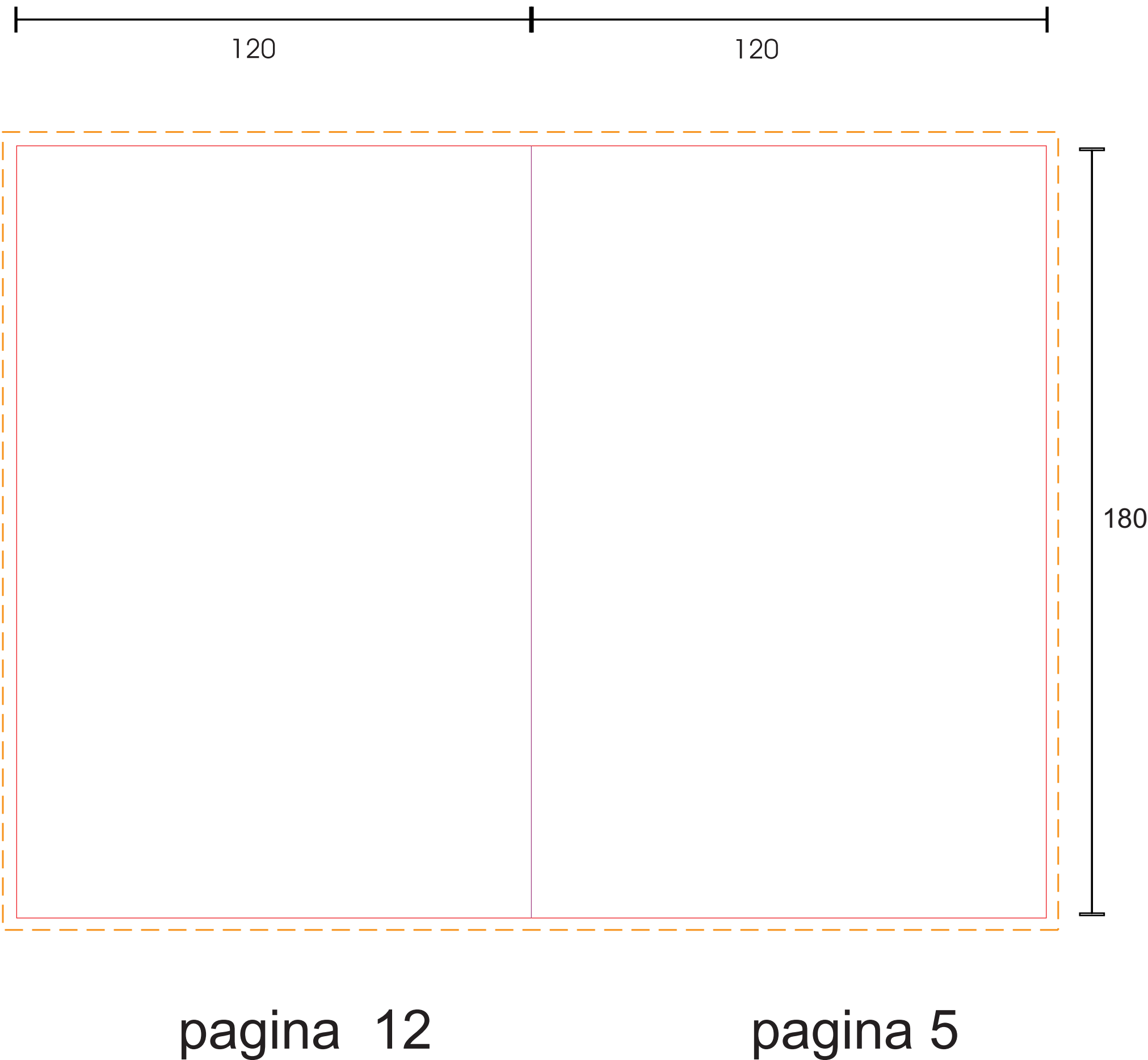


— Taglio

— Piega

— Quotatura

- - - - - Abbondanza per la grafica

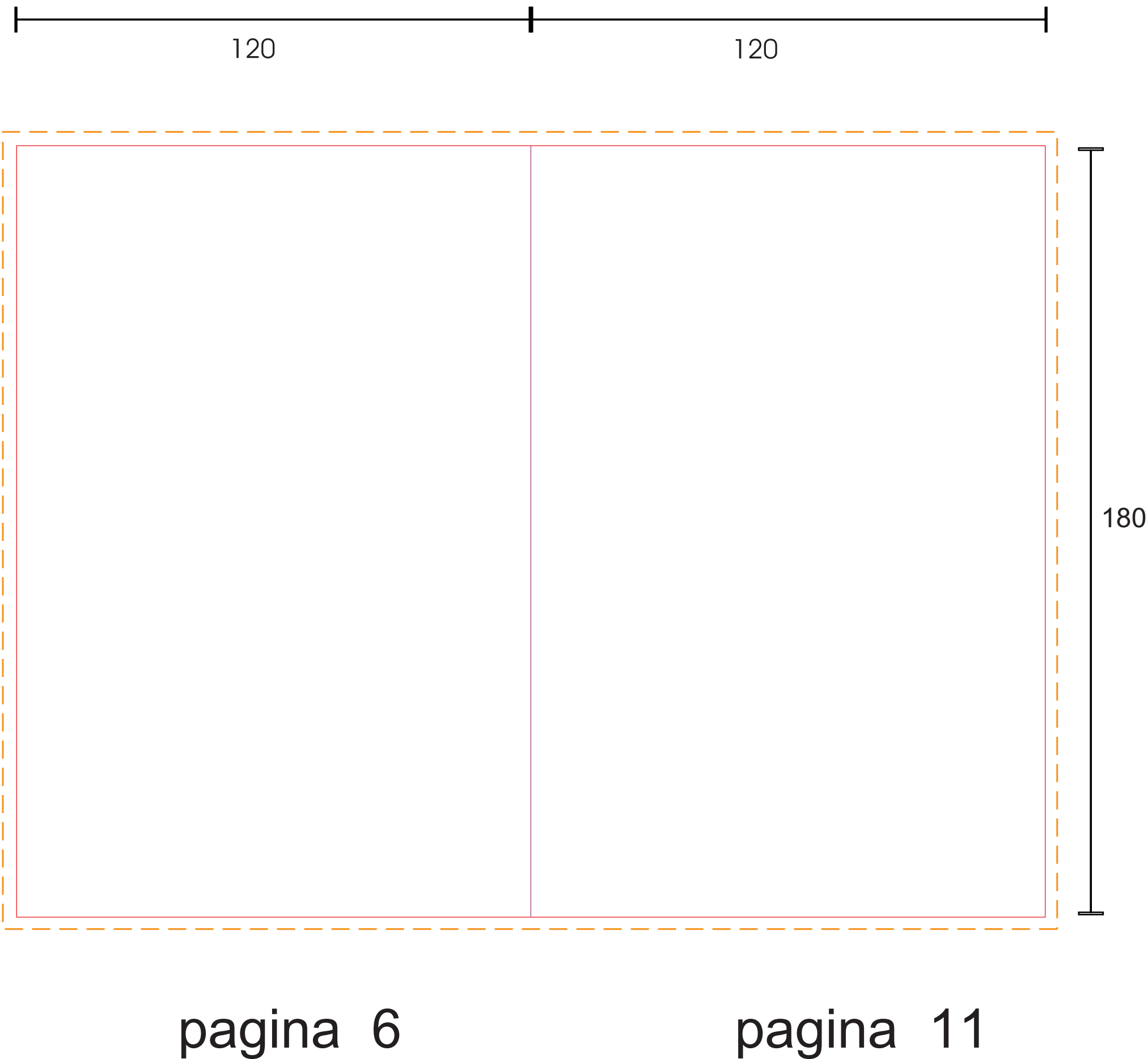


— Taglio

— Piega

— Quotatura

- - - - - Abbondanza per la grafica



120

120

180

pagina 6

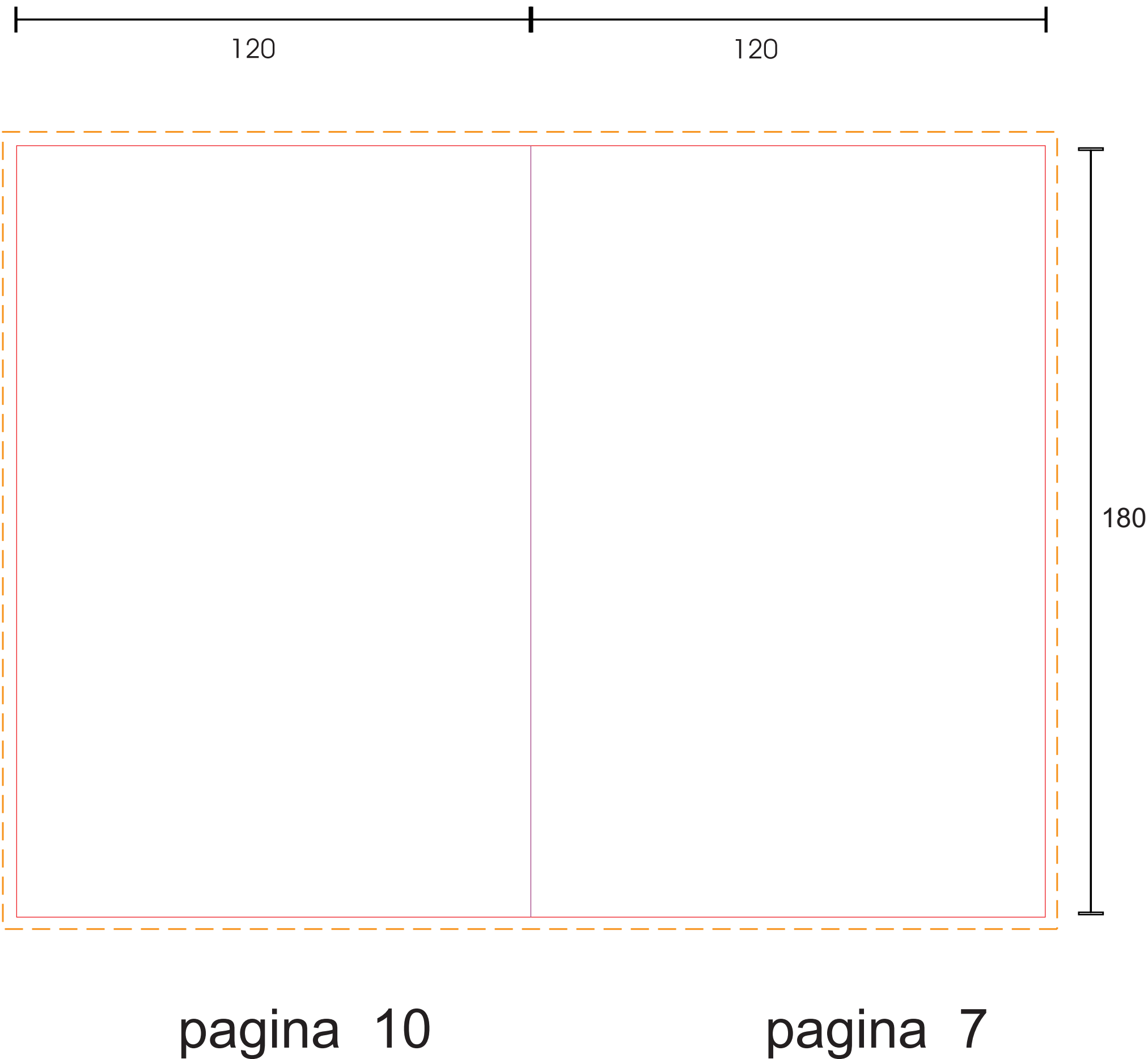
pagina 11

— Taglio

— Piega

— Quotatura

- - - - - Abbondanza per la grafica

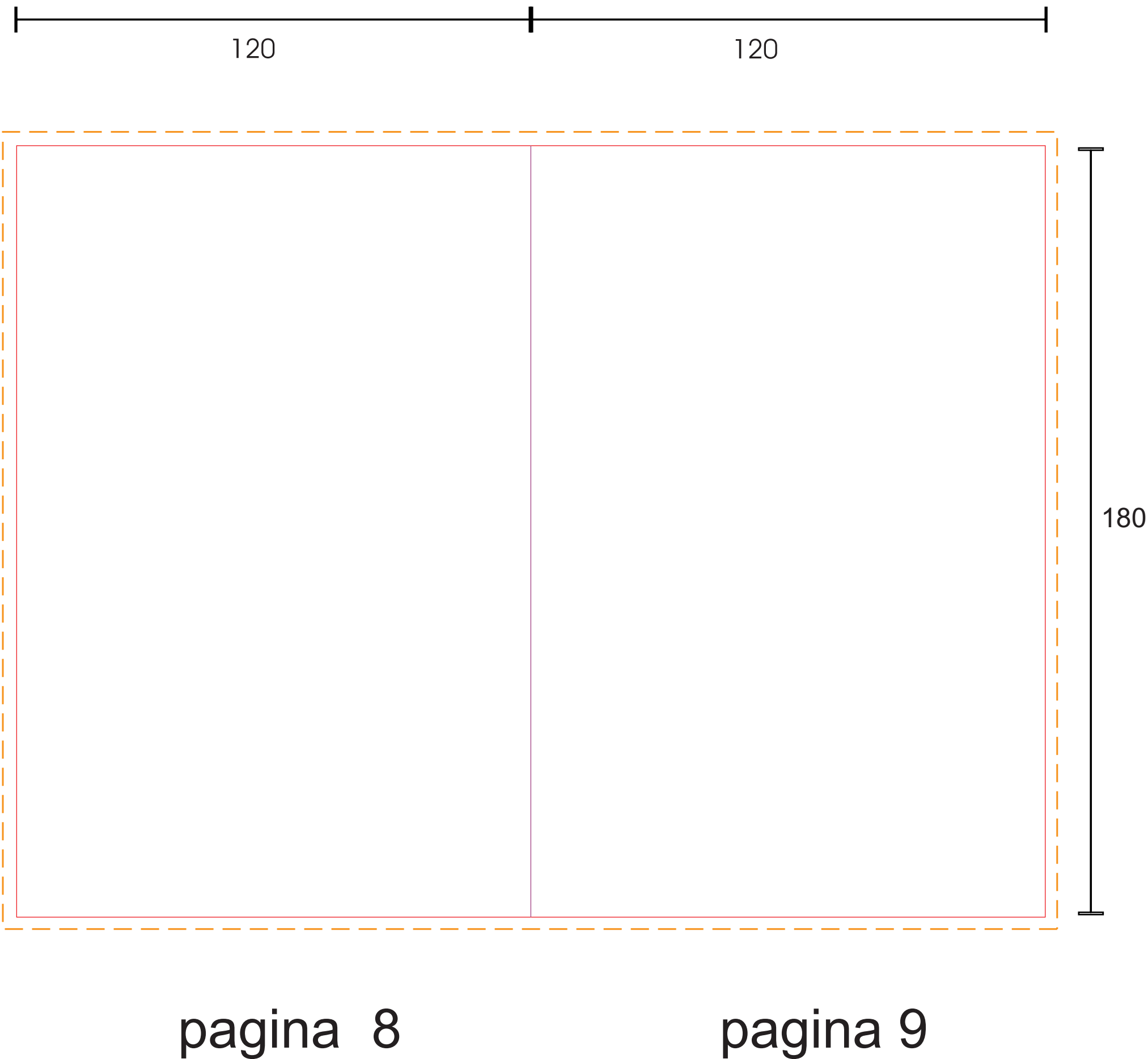


— Taglio

— Piega

— Quotatura

- - - - - Abbondanza per la grafica



120

120

180

pagina 8

pagina 9