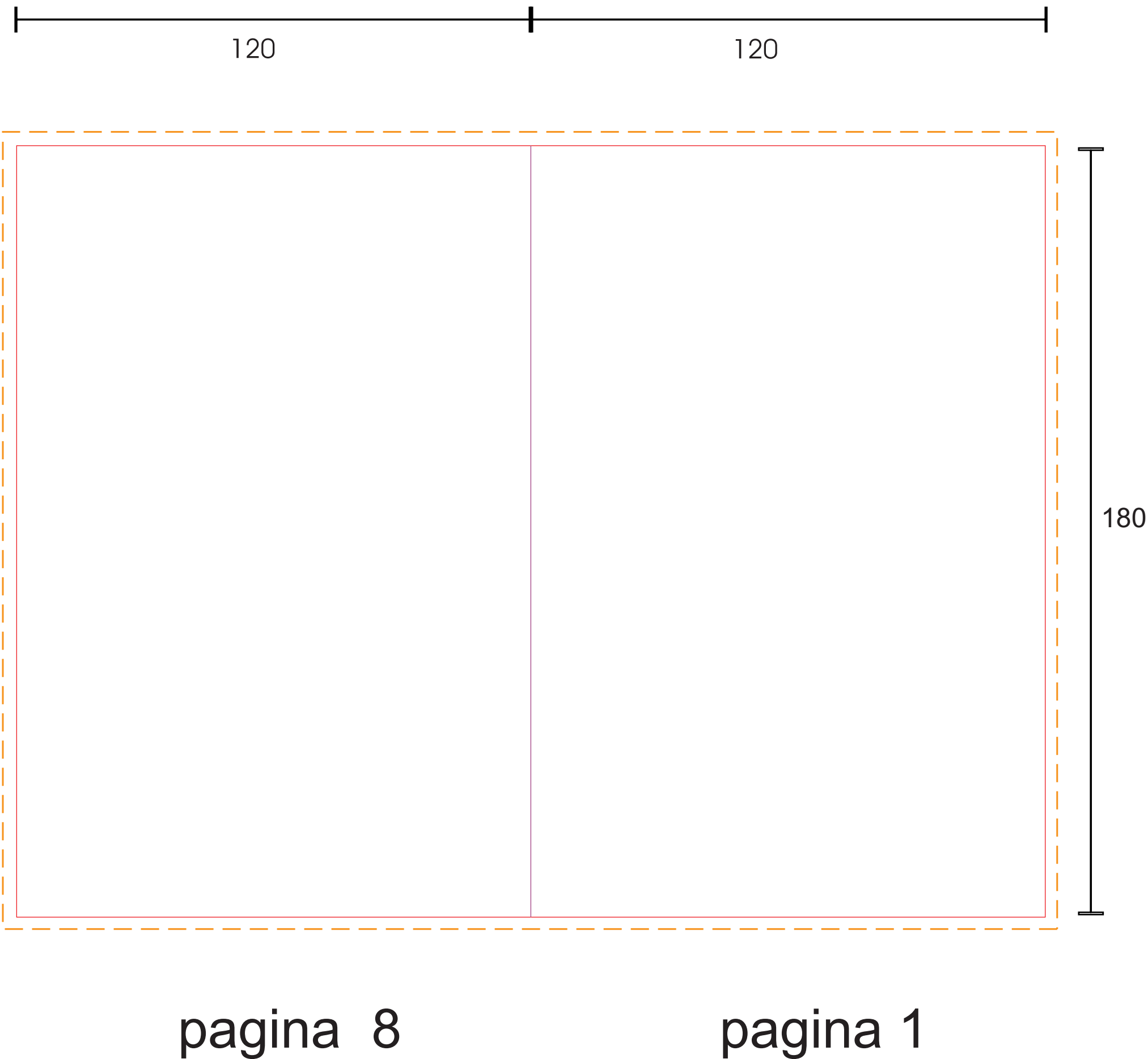


— Taglio

— Piega

— Quotatura

- - - - - Abbondanza per la grafica



120

120

180

pagina 8

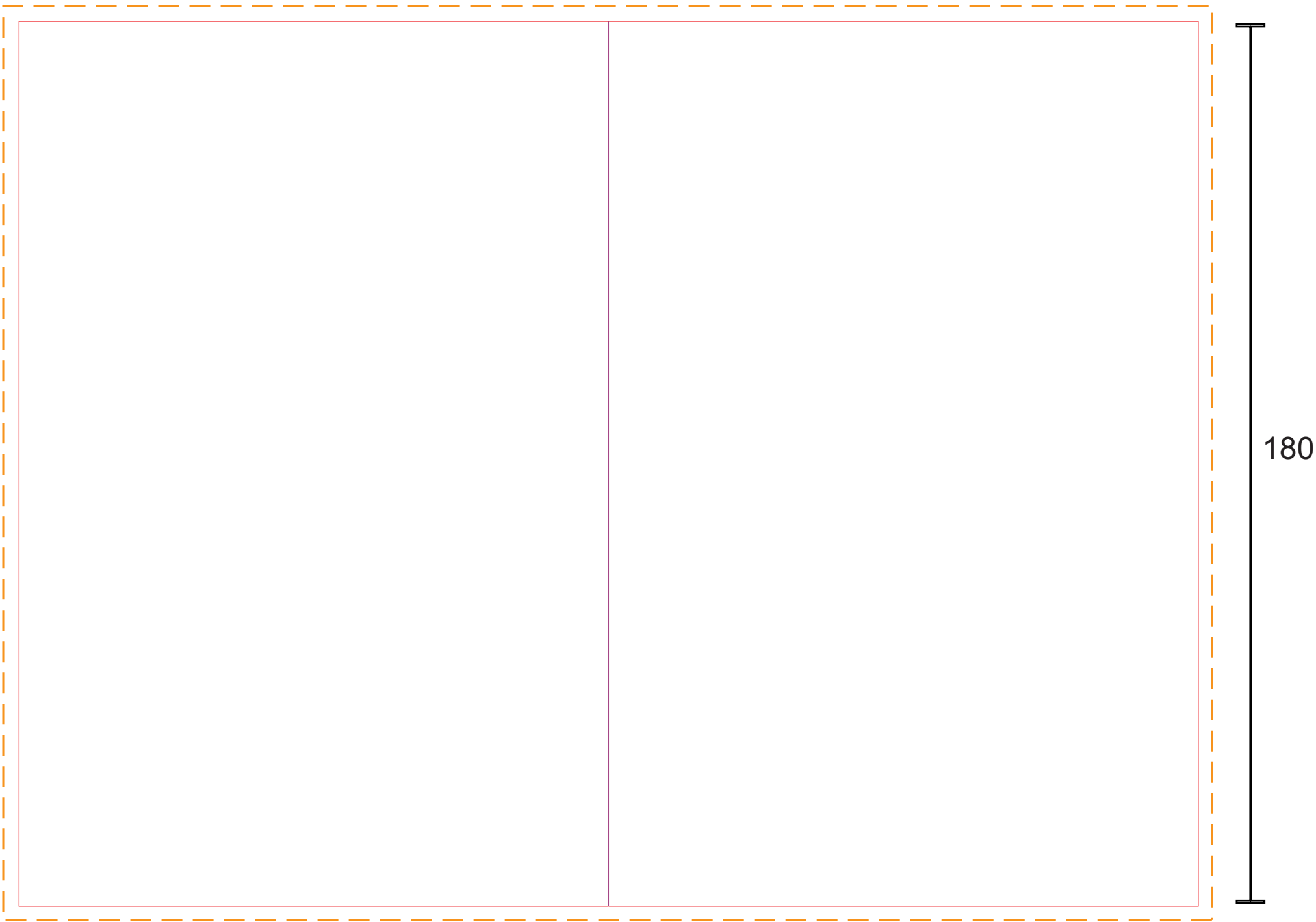
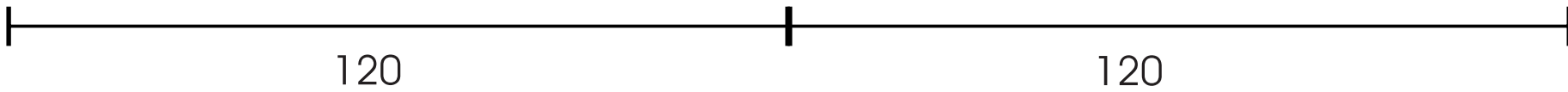
pagina 1

— Taglio

— Piega

— Quotatura

- - - - - Abbondanza per la grafica



pagina 2

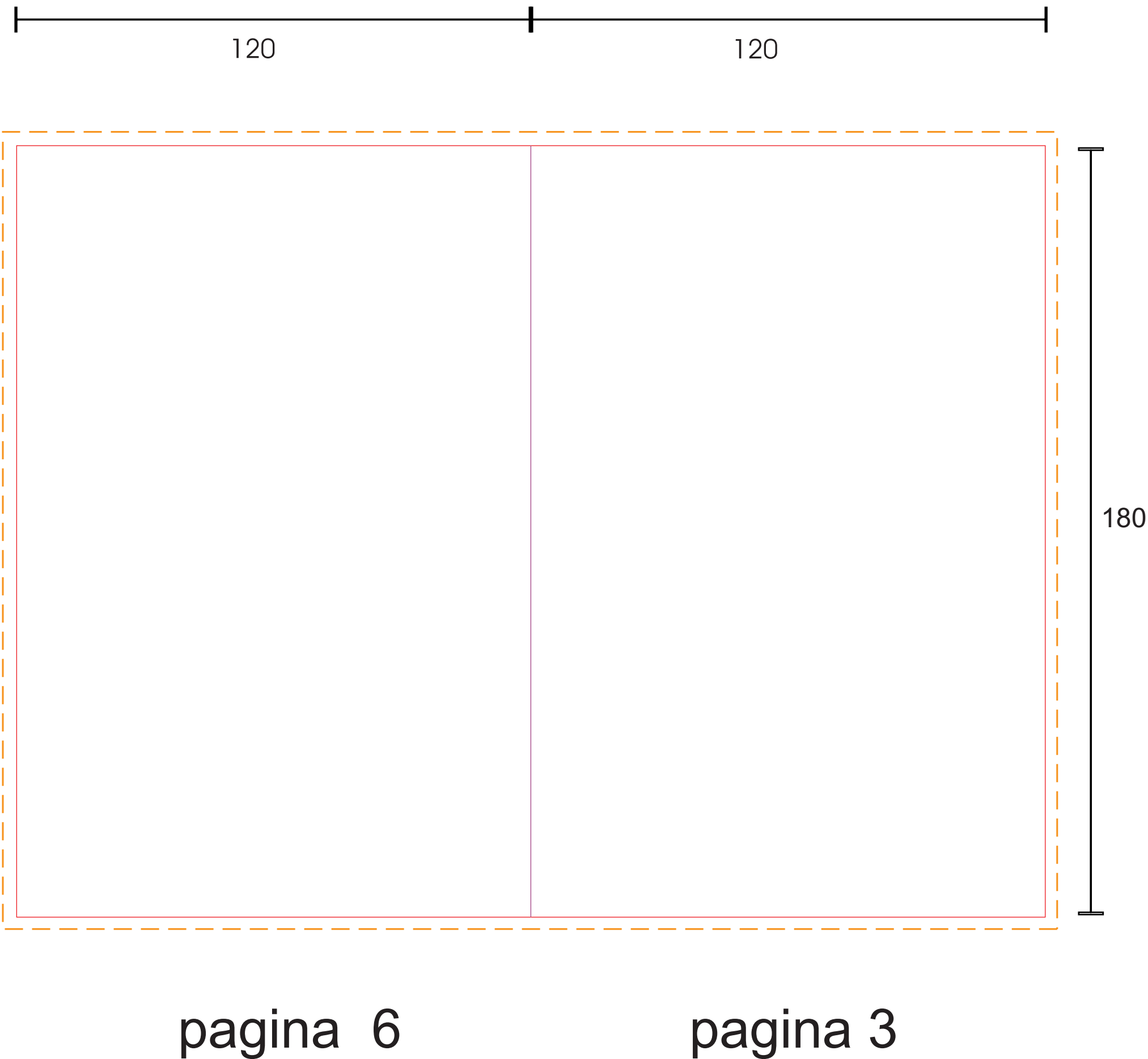
pagina 7

— Taglio

— Piega

— Quotatura

- - - - - Abbondanza per la grafica



120

120

180

pagina 6

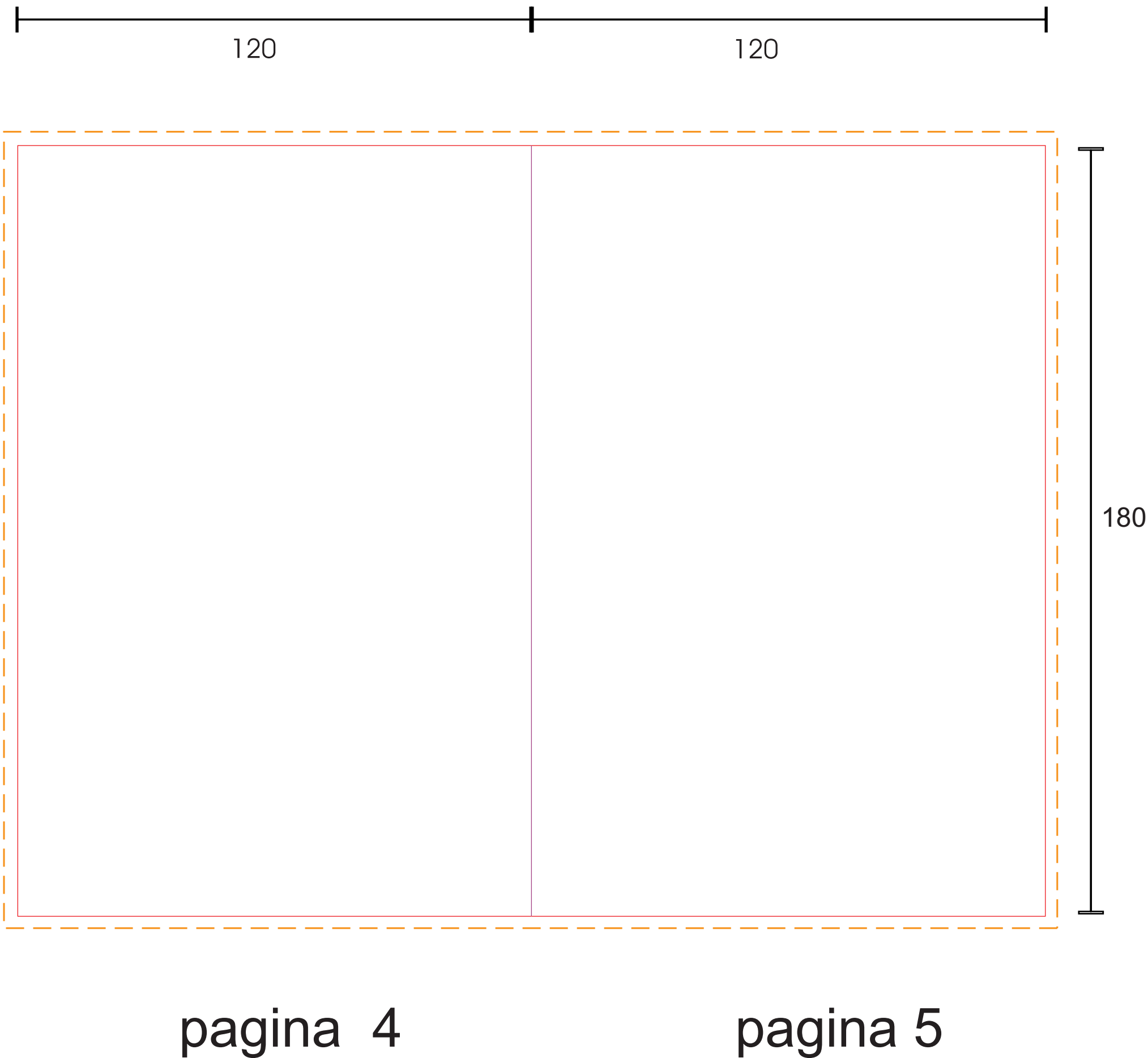
pagina 3

— Taglio

— Piega

— Quotatura

- - - - - Abbondanza per la grafica



120

120

180

pagina 4

pagina 5